

**PORTABLE HOIST  
MOUNTING OPTIONS**

Our simplest mounting system is perfect for attaching our lighter weight hoists to existing scaffolding.

This mount pivots 180 degrees, allowing convenient unloading at work level. Maximum load lift is 400 lbs.

Our heavy-duty mounting system is perfect for our large capacity hoists that specify monorail mounting. This mount is easily installed for between-the-floor or rooftop lifting, but must be properly counterbalanced. This system has a vertical capacity of up to 2000 lbs with a 3.5 ft outward cantilever.

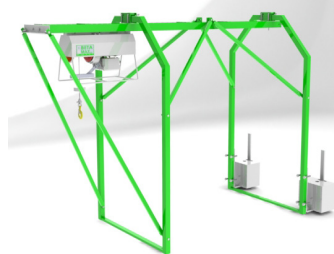
Flexibility and versatility are delivered with our I-Beam Mounting Trolley. The addition of a rolling I-Beam Trolley Top allows many Beta Max Hoists to adapt to existing I-Beams. If the horizontal trolley is not necessary, Beta Max offers a Fixed I-Beam Top which firmly holds the hoist stationary on to the I-Beam. I-Beam suspension brackets are available for hanging I-Beam to scaffold frames as shown in illustrations.

Our most popular mounting systems attaches in minutes, with no tools, to existing scaffolding and is used with all Beta Max hoists. It features a 3.5 ft overhang on conventional 7 ft spaced, walk-thru scaffold frames. Unlimited system lengths are available using add-on 7 ft Scaff-Trac extensions. The Scaff-Trac has a weight limit of 1200 lbs when used with conventional scaffolding. The Mac-Trac system is also available for use with 5 ft mason-type scaffold frames.

**Post Mount**



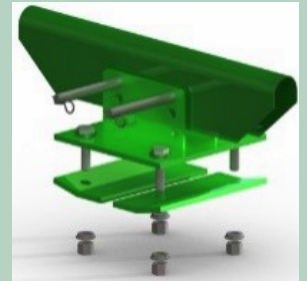
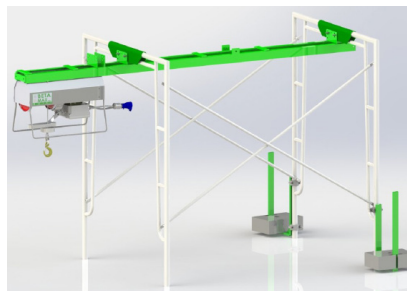
**Trestle Monorail**



**I-BEAM**



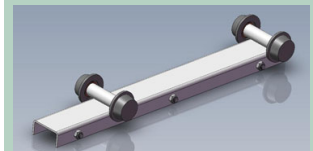
**SCAFF-TRAC**



**I-BEAM  
SUSPENSION  
BRACKET**



**I-BEAM  
TROLLEY**



**ROLLER TOP**

**Contact Beta Max today for local dealer information,  
to discuss your project, or get a quote.**

**[www.BetamaxHoist.com](http://www.BetamaxHoist.com)**

**(800) 644-6478**